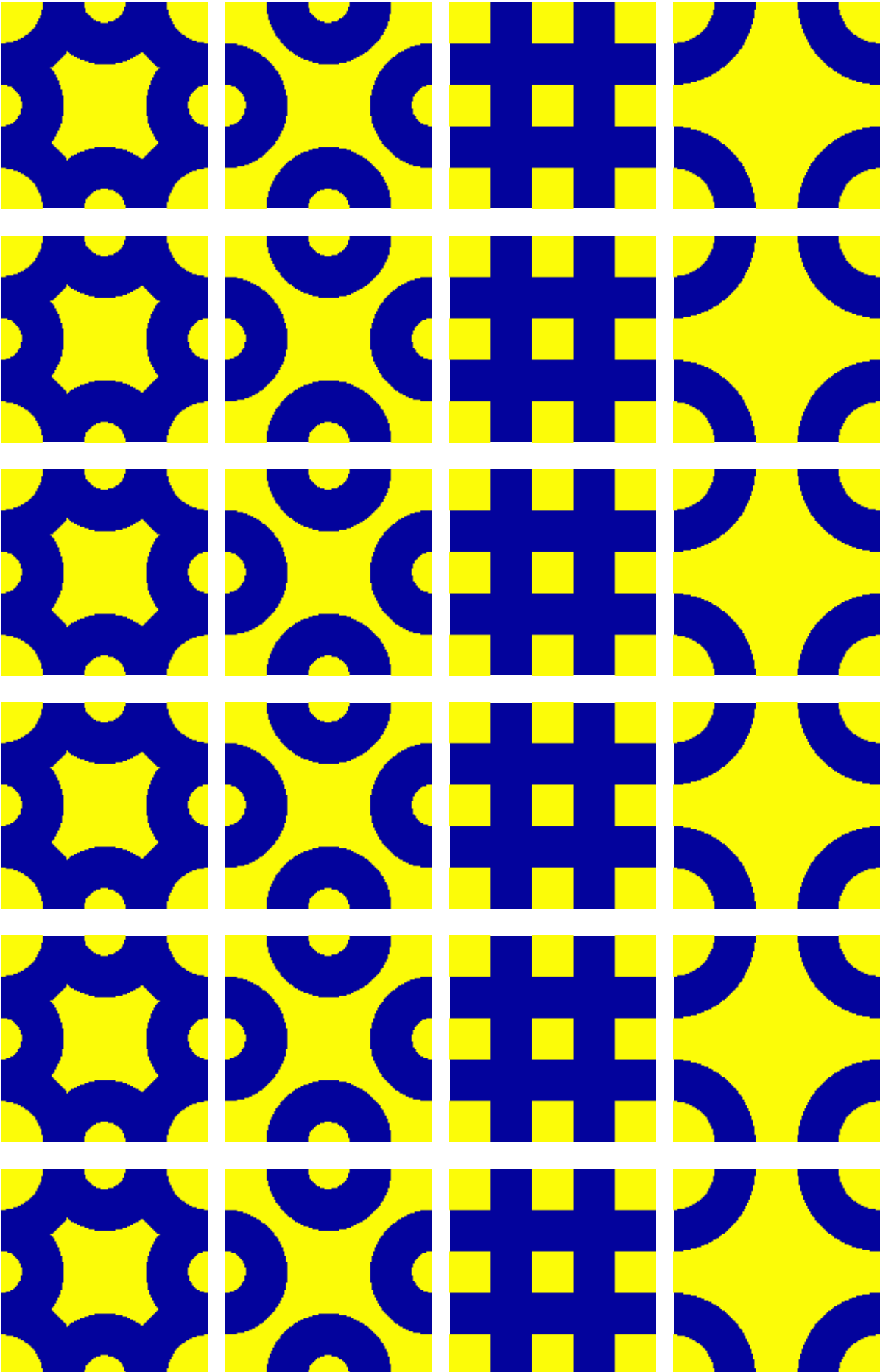
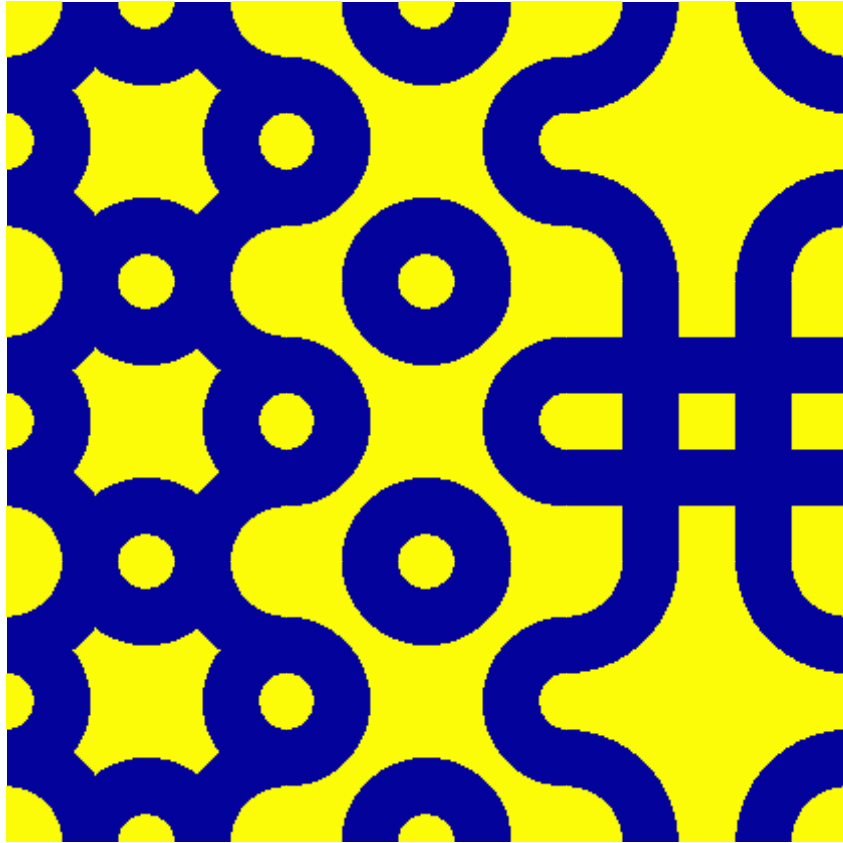
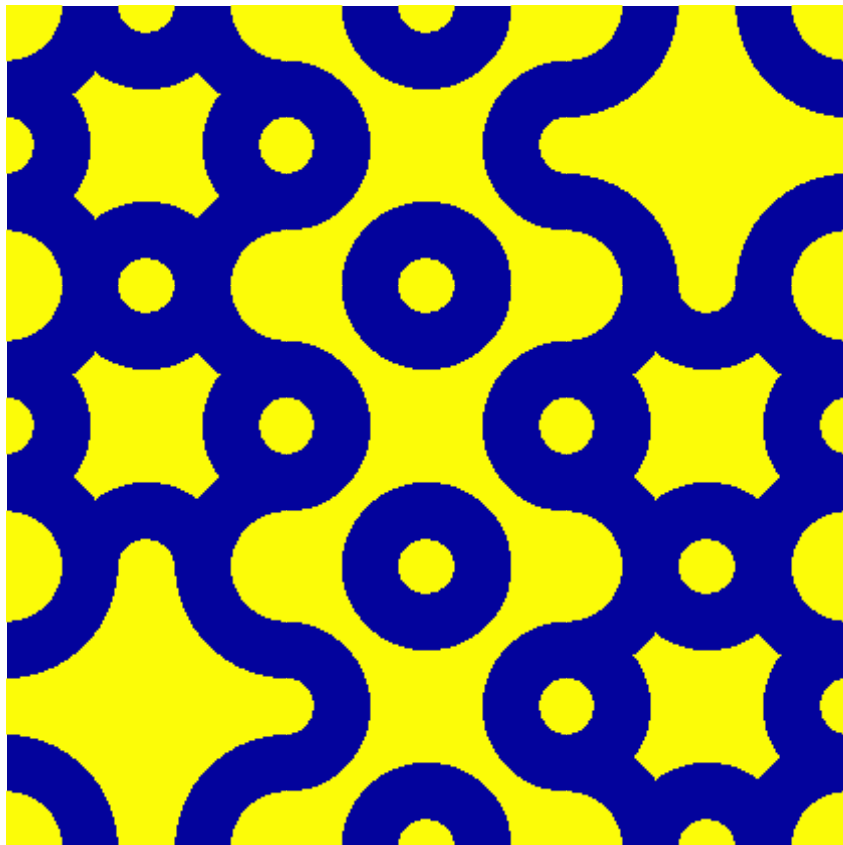


Bausteine ausdrucken, ausschneiden und zu Bildern legen.

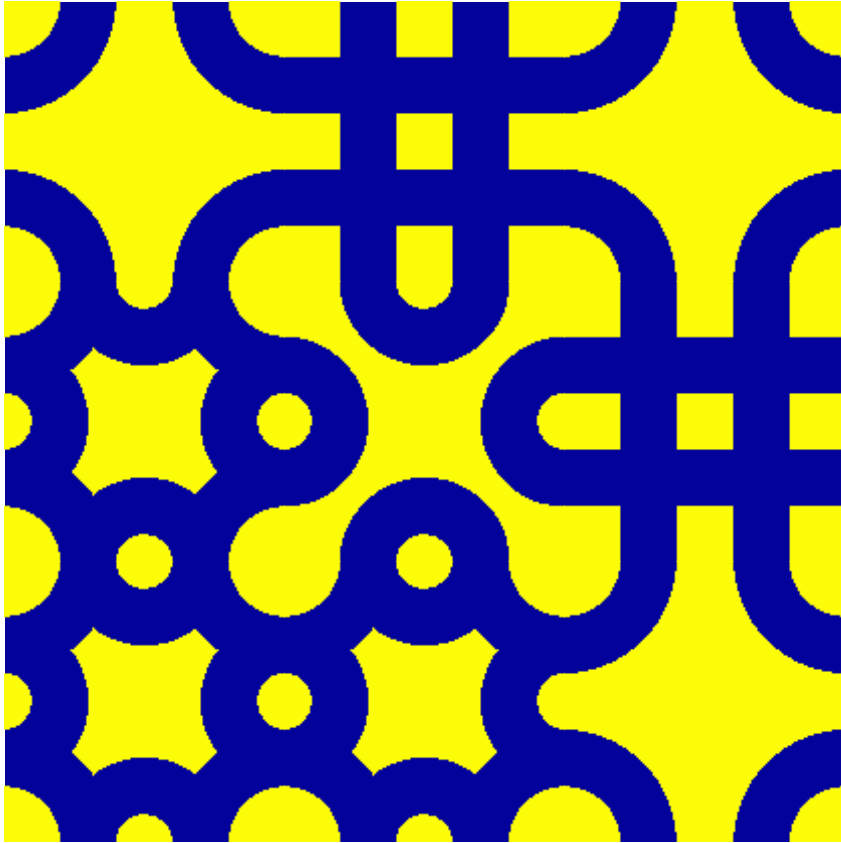




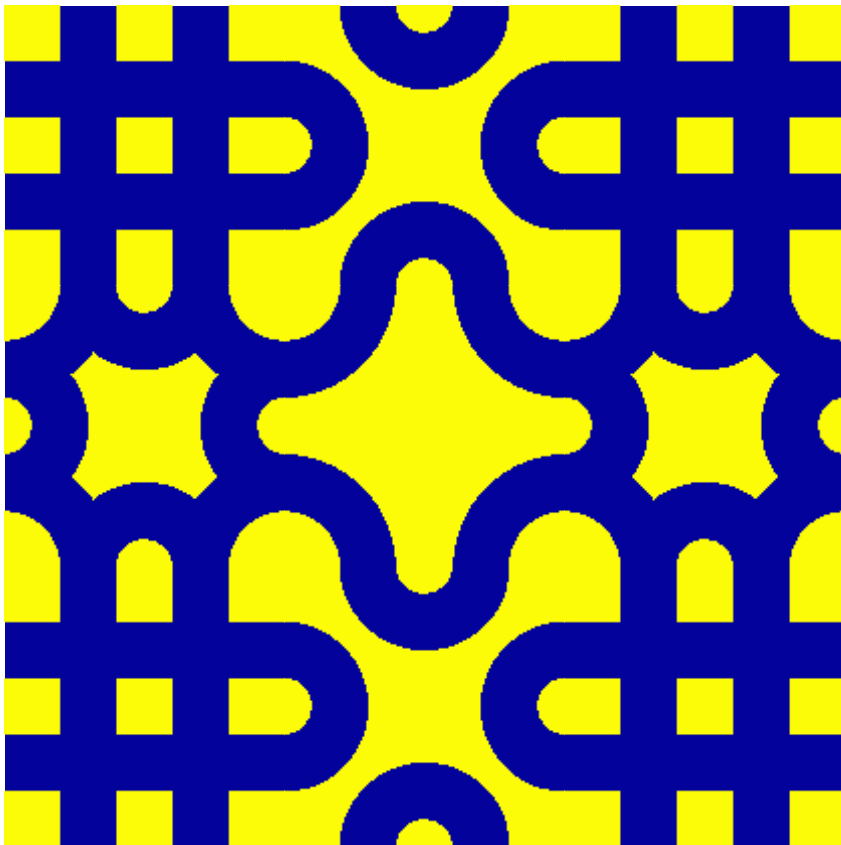
1



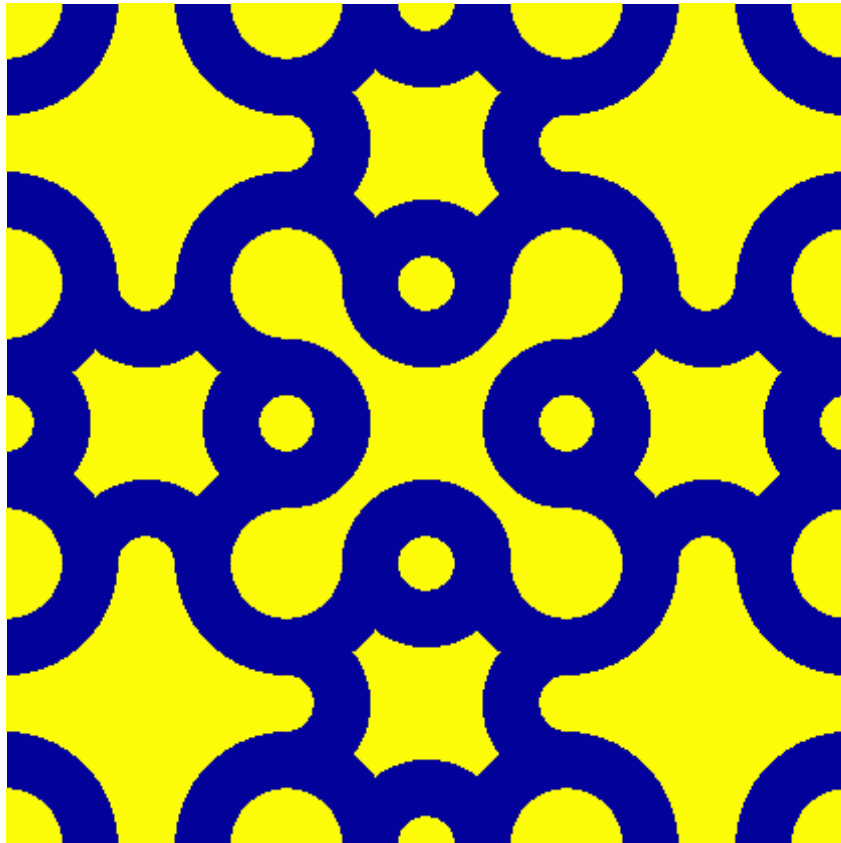
2



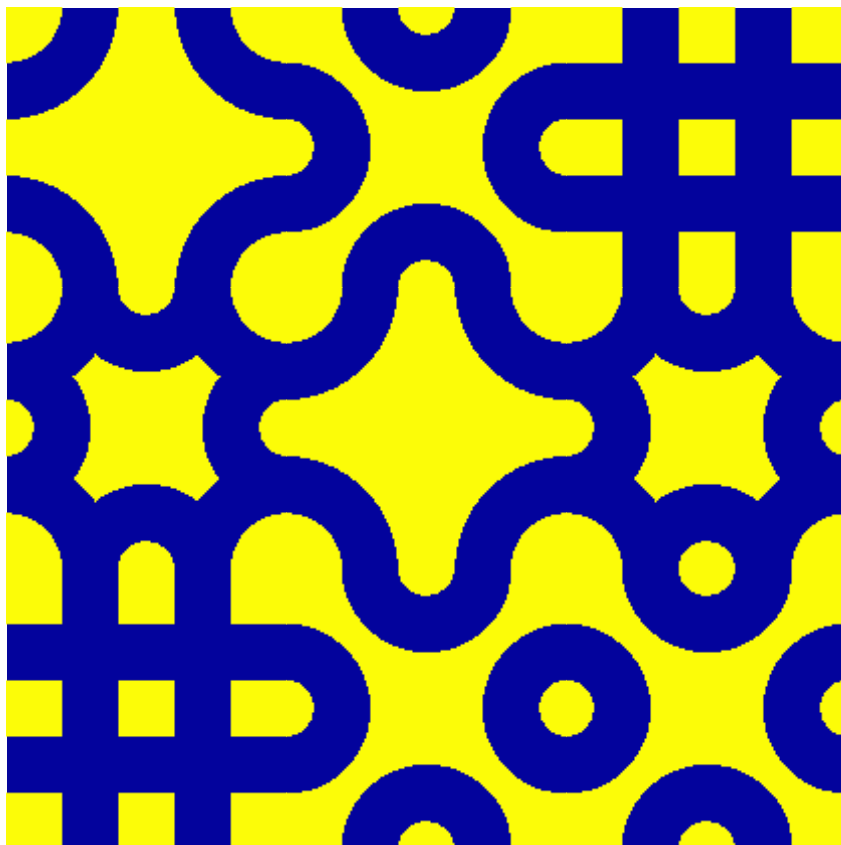
3



4



5



6

**4-strahlig drehsymmetrisch,
4 Symmetrieachsen, 1 Symmetriepunkt**

2 Symmetrieachsen, 1 Symmetriepunkt

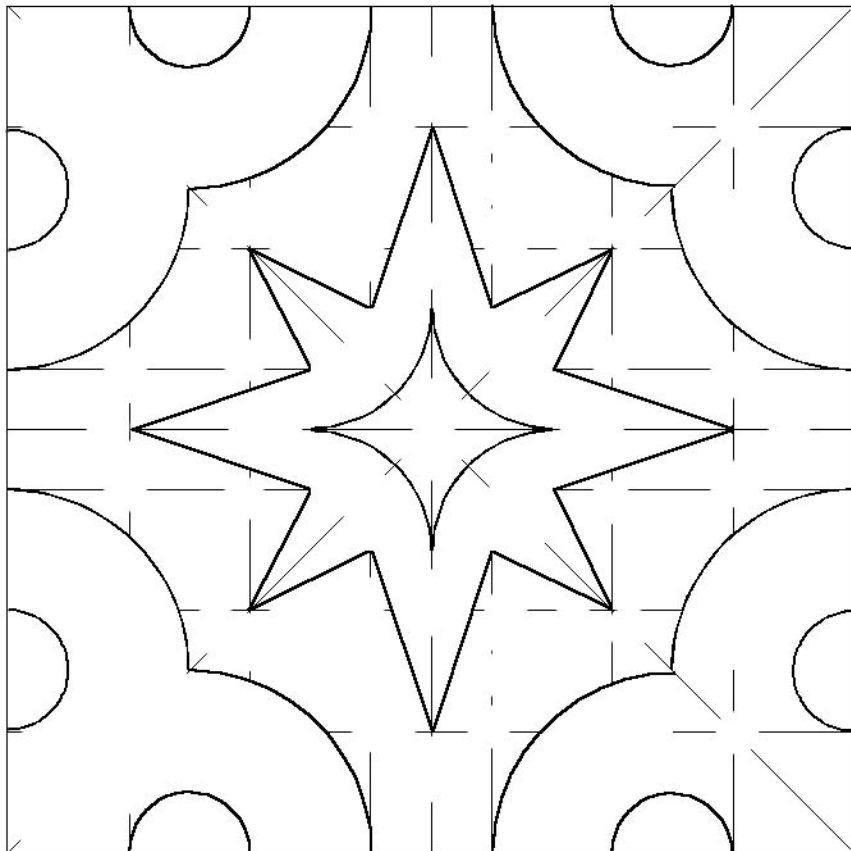
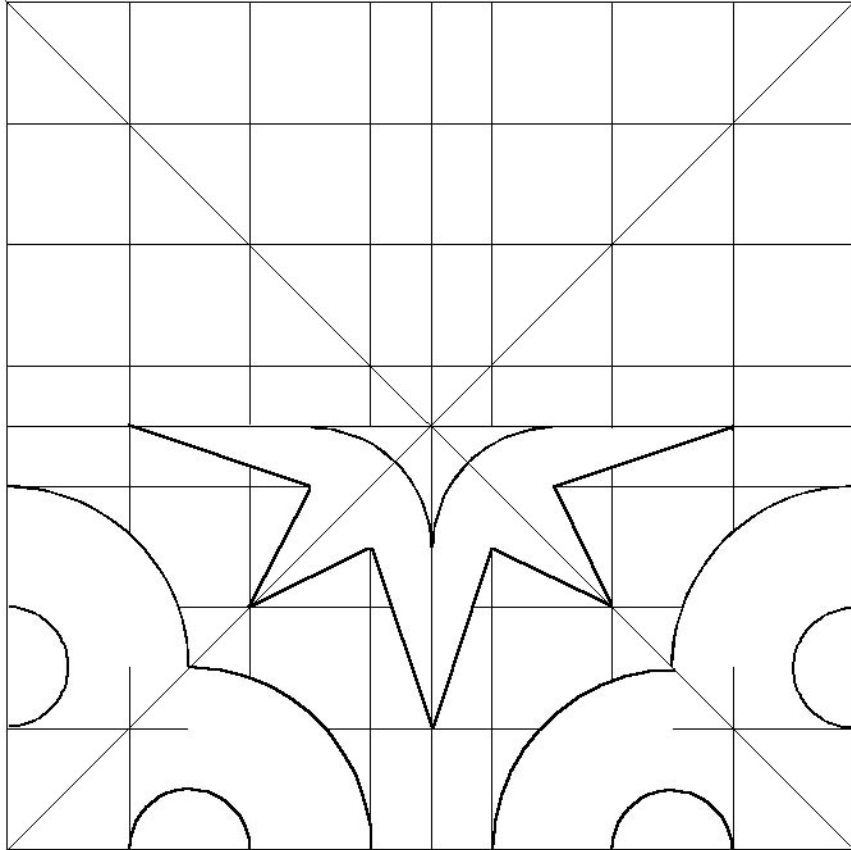
keine Symmetrien

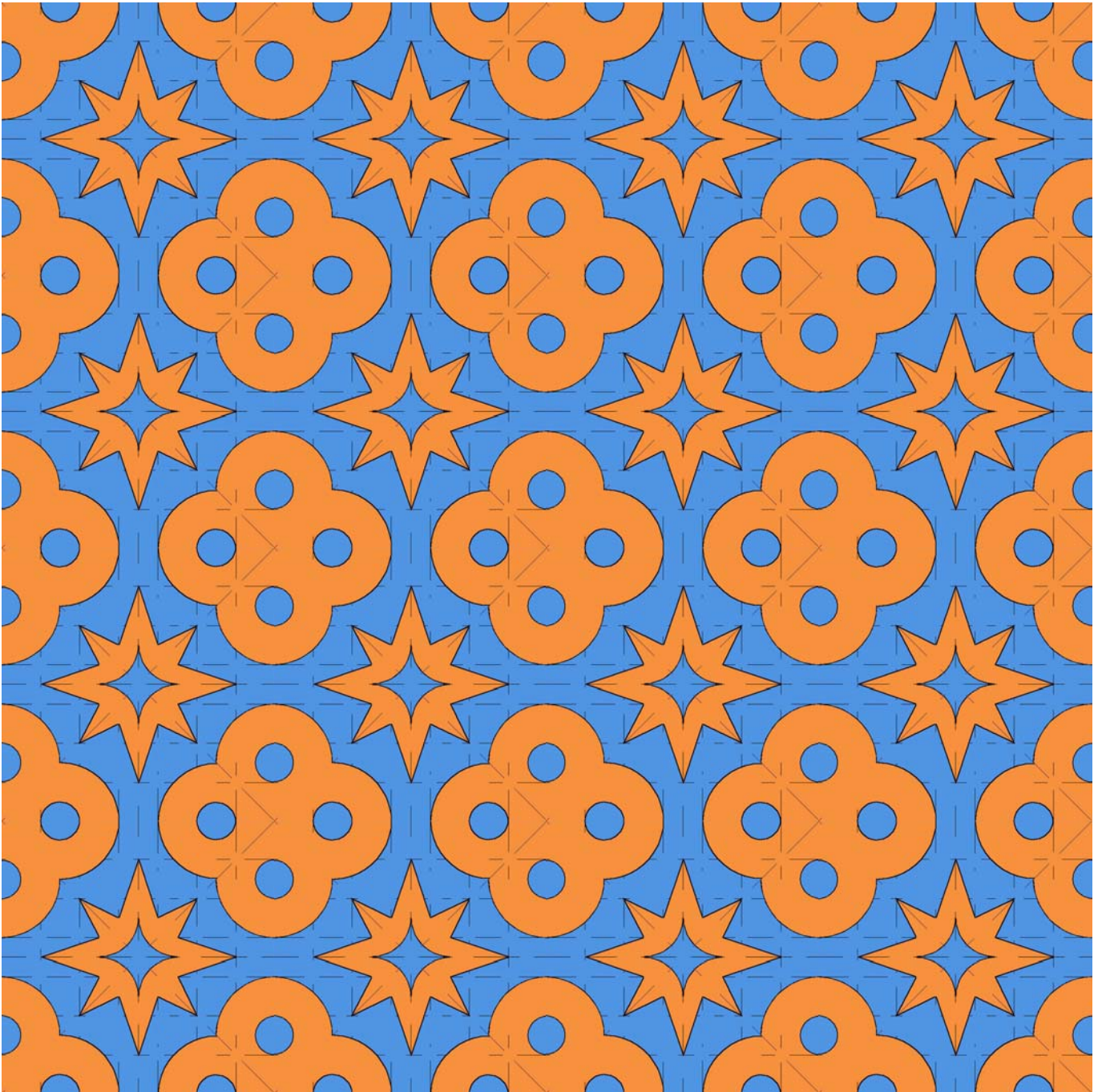
1 Symmetrieachse

1 Symmetrieachse

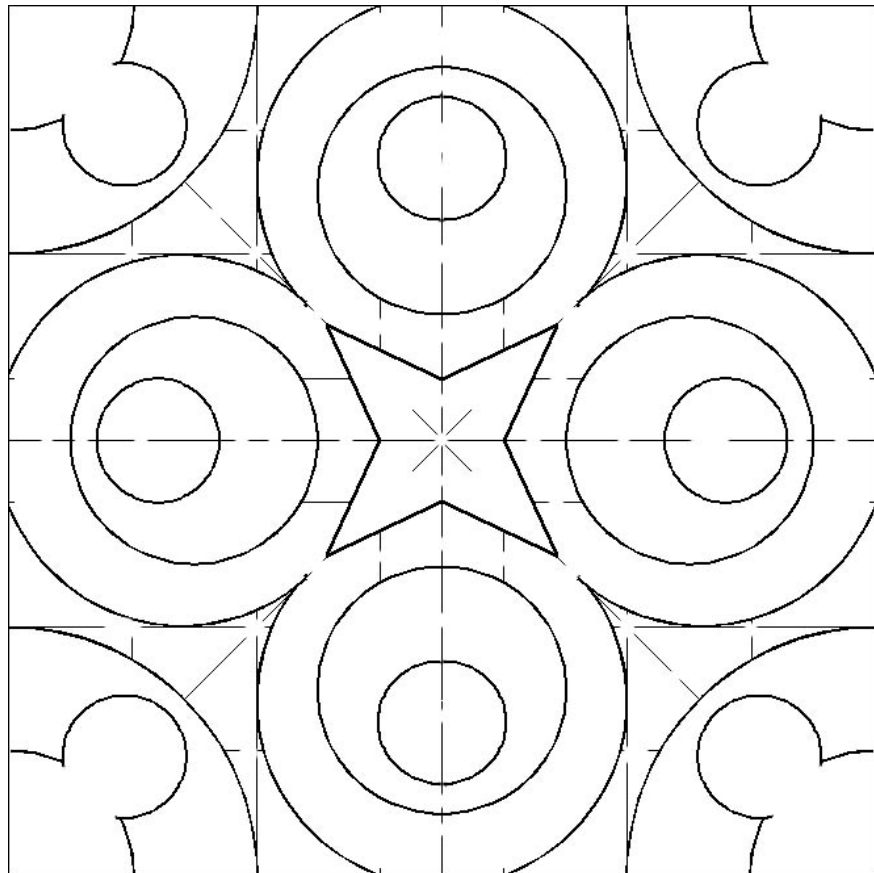
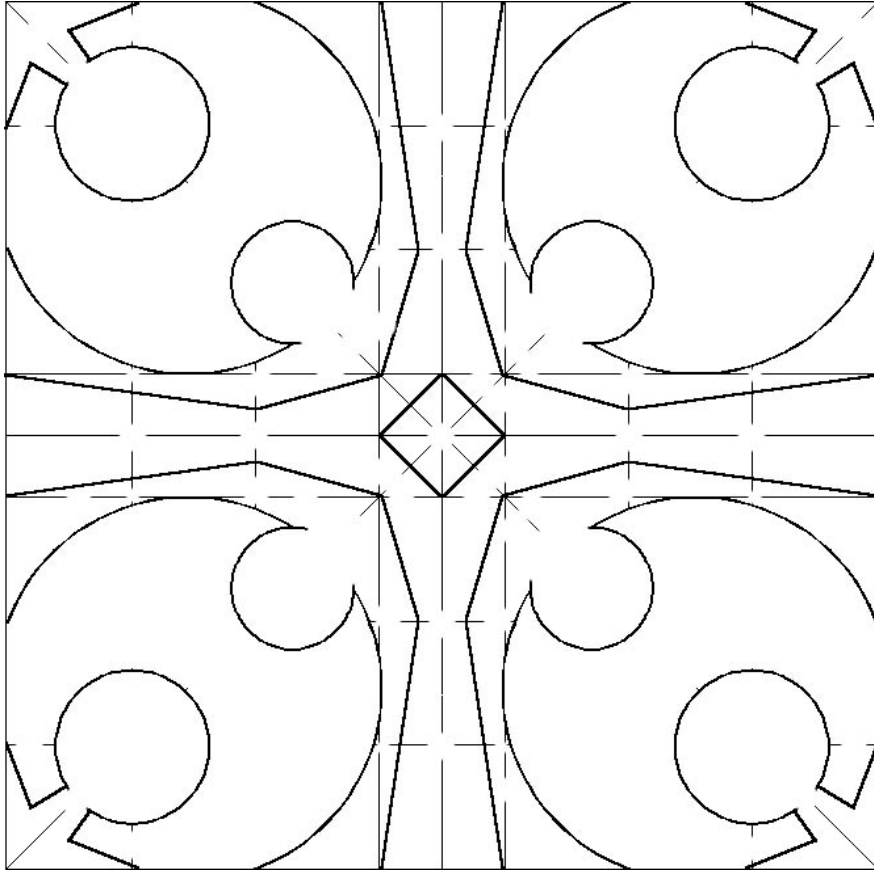
1 Symmetriepunkt

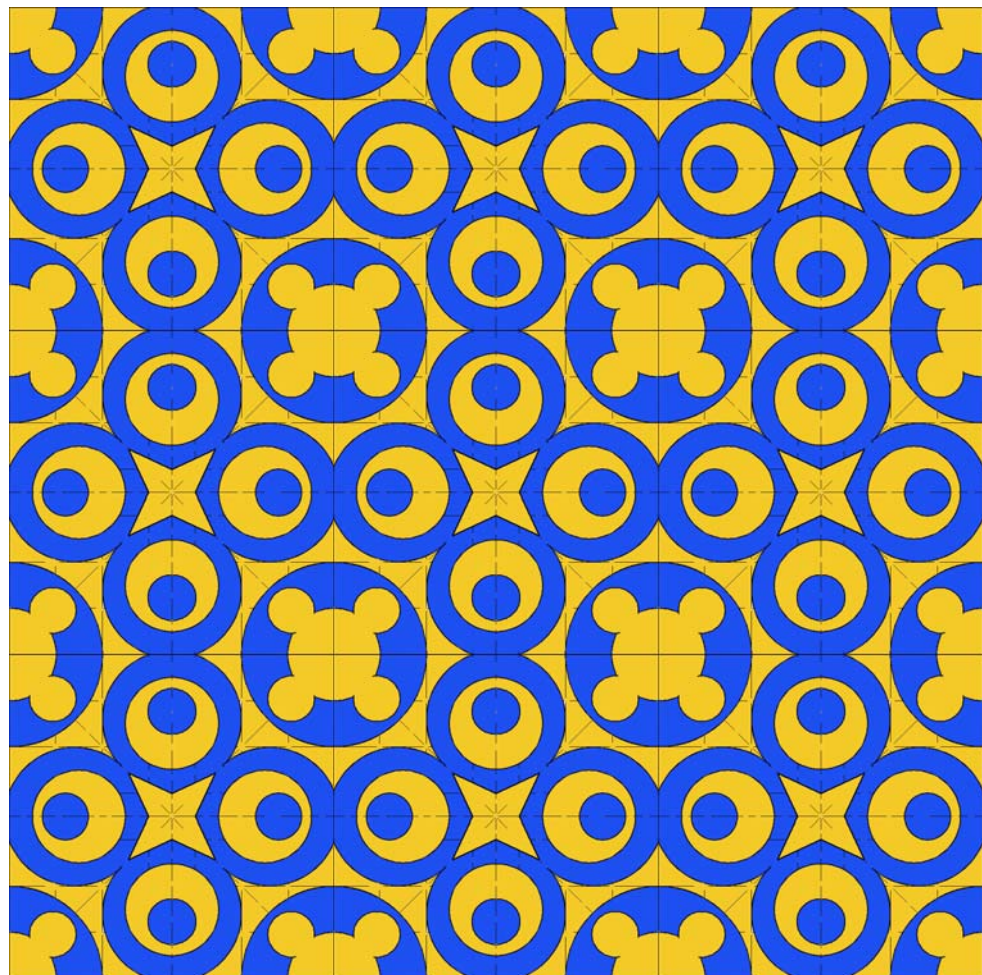
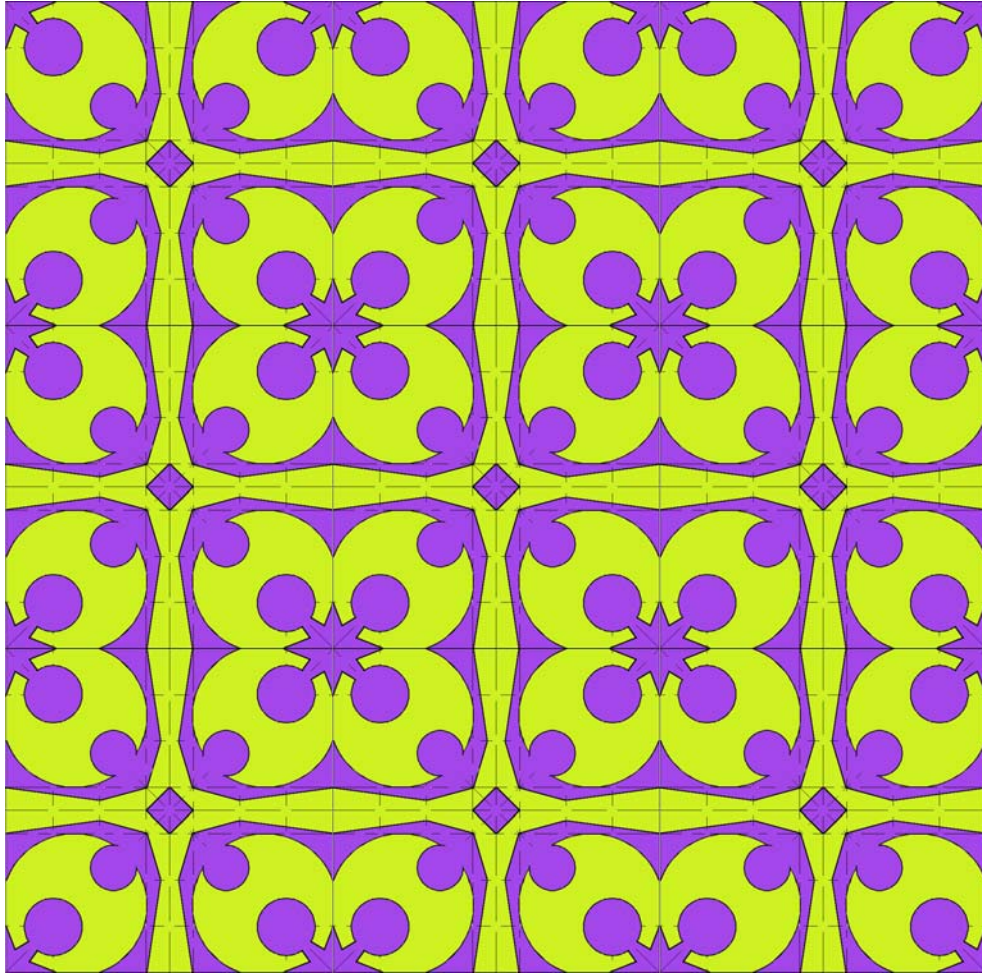
Ordne diese Eigenschaften den sechs vorhergehenden Bildern zu!

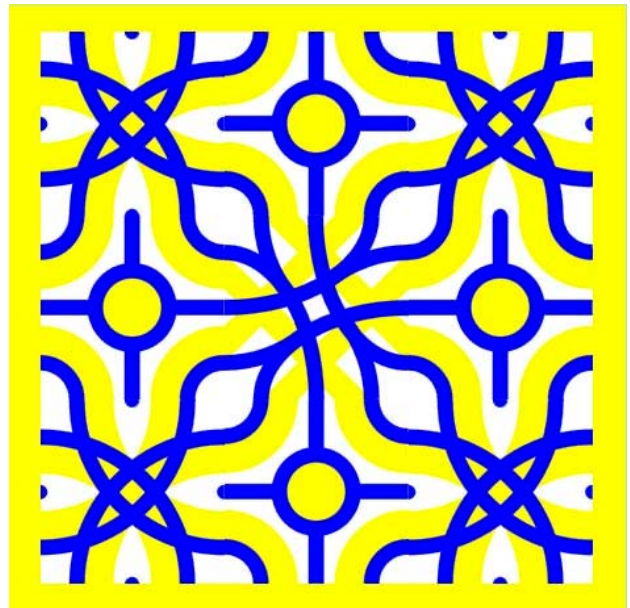
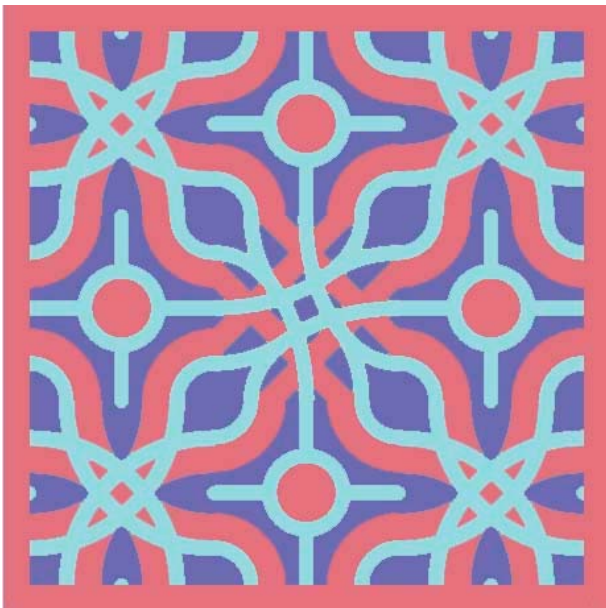
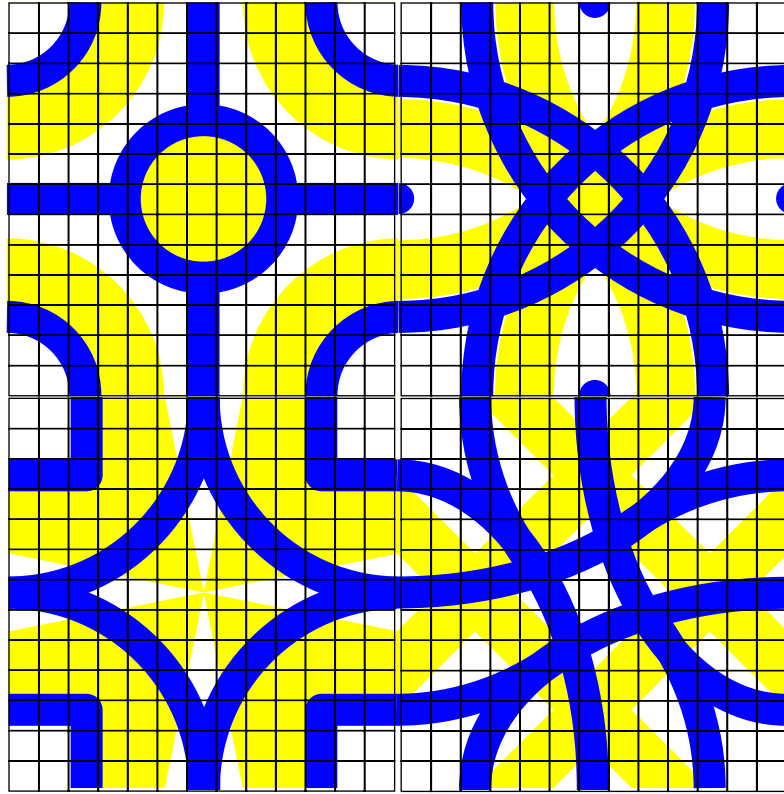




Kreiere selber symmetrische Bausteine!







Auch mit der Farbgebung lässt sich experimentieren.